

Public Information Meeting April 15, 2008



Project Background

- 2001 - RTC commissioned a study addressing congestion and safety along the Pyramid Highway Corridor. This *Pyramid Highway Corridor Management Plan* determined the need to:
 - Increase capacity
 - Improve safety
 - Alternate access to existing freeway system



Recommendation of Plan

"Package C"

- Upgrade Pyramid Highway to restricted access freeway
- Outer Ring Freeway connecting US 395 to Vista Blvd.
- West Sun Valley route - north/south connecting to US 395 @ Parr/Dandini

Benefits:

- Connects with arterials
- Improves vehicular safety
- Improves total travel time in daily hours

2007 revisions made to address land use planning needs in region.

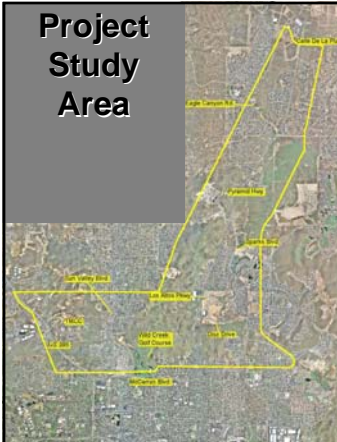


Goals of the Study

- Conduct:
 - Conceptual planning
 - Environmental analysis (EIS)
 - Preliminary engineering services
 - Preliminary design of recommended alternatives
- Facilitate a collaborative process with interested community members, agencies and regulators



Project Study Area



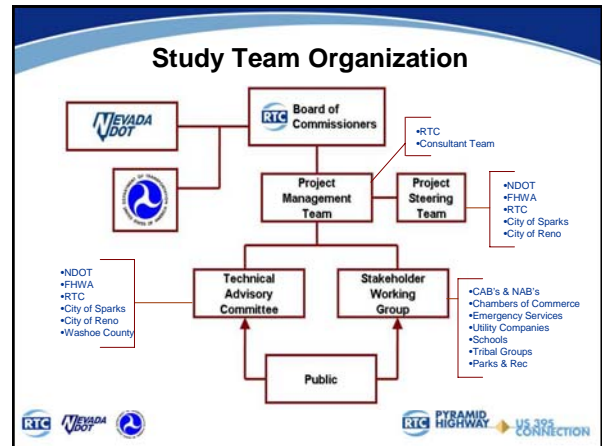
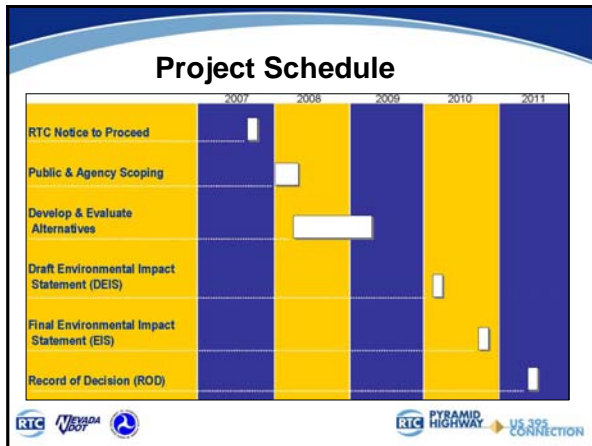
- Pyramid Way (Queen Way to Calle de la Plata)
- Proposed new corridor from U.S. 395 to Vista Drive at south end of Pyramid Way



Preliminary Project Development Timeline

- 2007-2011 – NEPA/Preliminary Engineering
- 2011--2015 – Final Design/Right-of-Way (depending on available funding)
- ~2015 – Construction could begin (depending on available funding)





Environmental Process

NEPA is the Federal Process

- **National Environmental Policy Act** of 1969 (signed in 1970)
- a National Policy to encourage productive and enjoyable harmony between **man and his environment**...

Logos: RTC, NEVADA DOT, PYRAMID HIGHWAY, US 395 CONNECTION

- ### Agencies we will coordinate with:
- Washoe County
 - Cities of Sparks and Reno
 - FEMA
 - EPA
 - Bureau of Indian Affairs
 - National Park Service
 - US Fish and Wildlife Service
 - State Historic Preservation Officer
- Logos: RTC, NEVADA DOT, PYRAMID HIGHWAY, US 395 CONNECTION

- ### Agencies we will coordinate with:
- US Army Corps of Engineers
 - Reno-Sparks Indian Colony
 - NV Div. of Environmental Protection
 - NV Div. of Wildlife
 - Washoe Tribe
 - Pyramid Lake Paiute Tribe
 - Dept. of Conservation and Natural Resources
- Logos: RTC, NEVADA DOT, PYRAMID HIGHWAY, US 395 CONNECTION

- ### NEPA Requires Public Involvement
- Open process
 - Other methods:
 - public notices/advertisements
 - public meetings
 - project website
 - small group meetings
 - public displays, etc.
 - Environmental Justice
 - requires “specialized, targeted outreach” to low income and minority populations.”
-
- Logos: RTC, NEVADA DOT, PYRAMID HIGHWAY, US 395 CONNECTION

1st Step - Purpose and Need

- The Backbone of the NEPA document.
- In many ways the most important chapter of an EIS.
- It establishes why the agency is proposing to spend large amount of taxpayer money.
- It establishes why the agency is proposing to cause significant environmental impacts.



Draft Purpose and Need Elements

Preliminary transportation needs to be addressed:

- Existing congestion problems on Pyramid Highway
- Existing and forecasted population growth.
- Existing safety problems on Pyramid Highway.
- Existing and future access needs.
- Existing travel inefficiencies.

Will be consistent with regional and local plans.



Draft EIS Addresses Environmental Consequences

- | | |
|---|--|
| <ul style="list-style-type: none">▪ Relocation▪ Noise, air, water▪ Land use▪ Wildlife▪ Economic▪ Social▪ Section 4(f)▪ Environmental Justice | <ul style="list-style-type: none">▪ Hazardous materials▪ Historic properties▪ Construction related▪ Wetlands, floodplains▪ Farmlands▪ Transportation and traffic▪ Cumulative |
|---|--|



Your Opinion Matters

- Provide comments to Court Reporter
- Provide comments on Comment Sheet
- Provide comments through website

Thank you for your participation!

